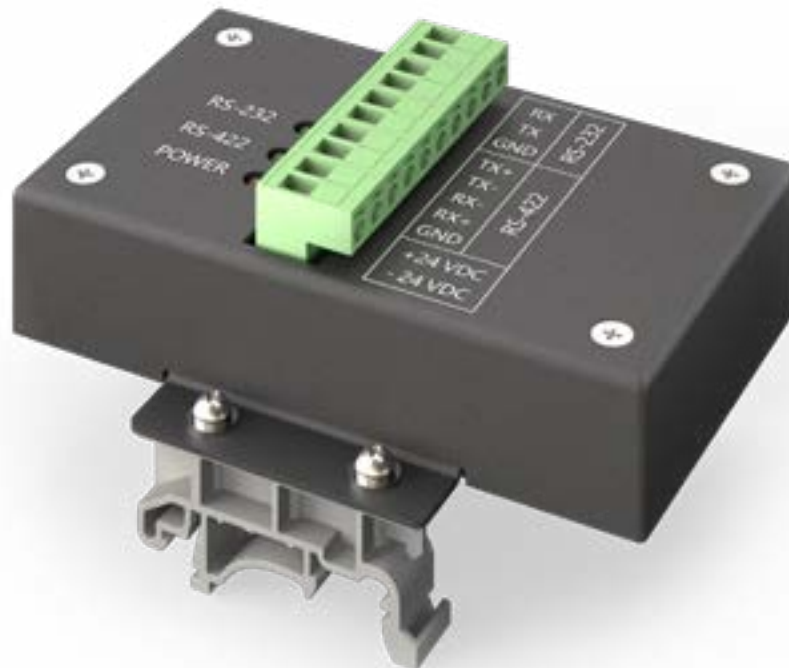


## Bidirectional RS-232/422 converter

**RS-104**


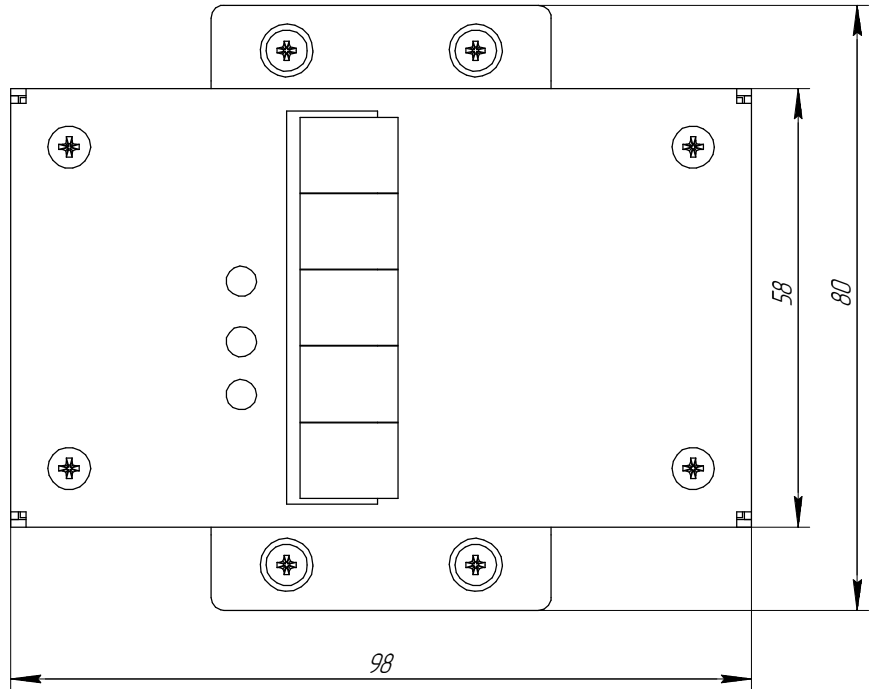
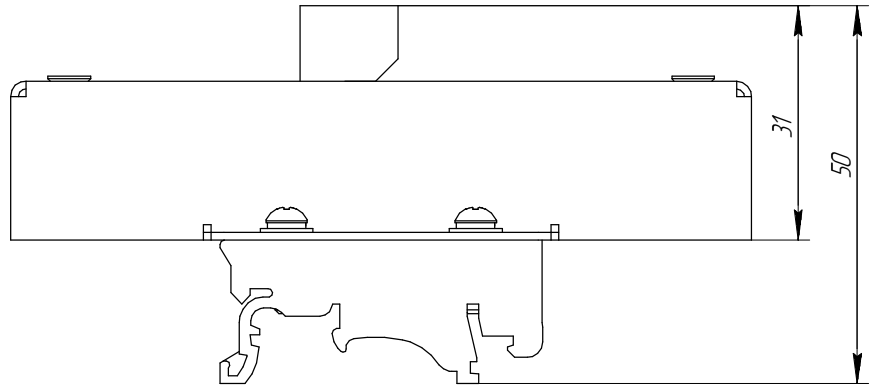
The RS-104 Interface converter is designed for the signal conversion between two standards: RS-232 and RS-422. It is the solution to combine equipment operating with RS-232 or RS-422 signals on river- and sea-going vessels.

**TECHNICAL CHARACTERISTICS**

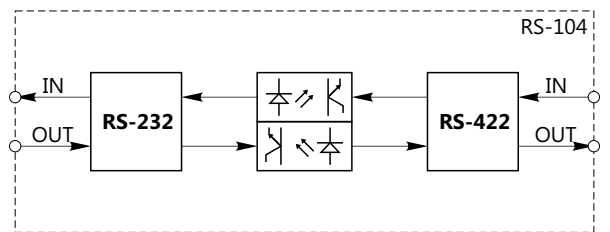
<b>General characteristics</b>	
Storage temperature	-60...+70°C
Operating temperature	-15...+55°C
Weight	0.2 kg
<b>Electrical characteristics</b>	
Power supply voltage	8...40 VDC
Power consumption	3 W

Delivered with DIN-rail mount.

<b>Characteristics of inputs</b>	
Number of input ports	2
Supported interfaces	RS-232 and RS-422
Receive rate	4800-115200 bit/s
Optoisolation of inputs/utputs	+
<b>Characteristics of outputs</b>	
Number of output ports	2
Supported interfaces	RS-232 and RS-422
Maximum baud rate	4800-115200 bit/s



**RS-104 dimensional drawing**



**RS-104 functional diagram**